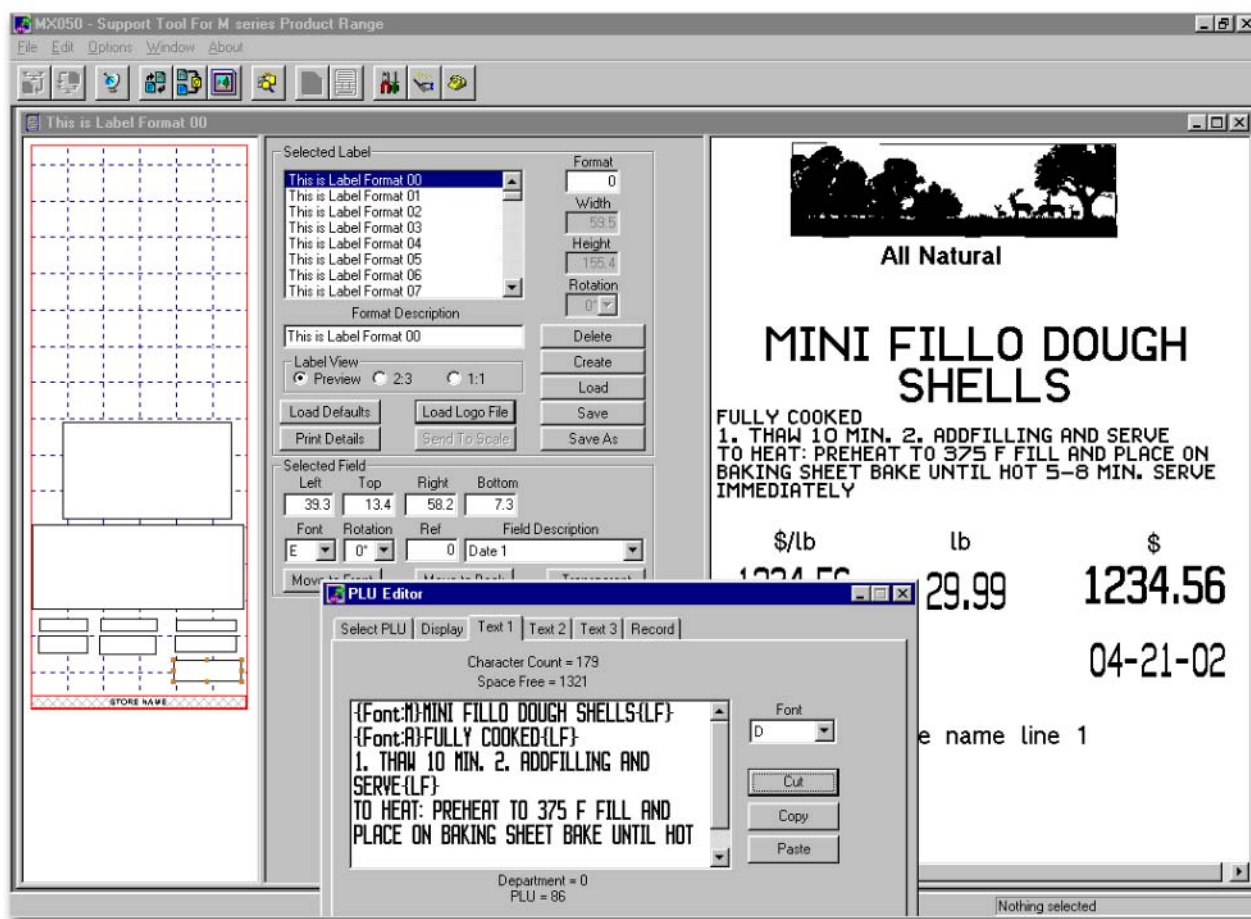


# MX050

## scale configuration tool

The MX050 Scale Configuration Tool is a flexible software package which enables you to easily configure Avery Berkel M series scales.

- ◆ Backup and restore all data from the scale.
- ◆ Remote control and diagnostics of any scale on the network.
- ◆ Graphical Label editor. Allows you to create custom labels any time and update the scale.
- ◆ Edit all PLU details, including text, pricing, article number etc.



**Avery Berkel**

retail and food service weighing solutions

# scale configuration tool

The MX050 software program enables authorized service and technical support staff to retrieve, edit and store label formats, amend text, transmit logos/graphics and data files to and from Avery Berkel M series scales. This flexible software package makes configuration of the M series easy.

## FEATURES & BENEFITS

- ◆ Send and Receive data files, complete system or individual PLU, label formats, keyboard layout
  - ◆ Send and Receive graphic files conveniently. This allows you to change the appearance of the label depending on circumstances, i.e. Halloween, Thanksgiving, Xmas etc, without purchasing new label stock
  - ◆ Convert data files from CX to M series or upgrade M series to a different software version
  - ◆ Merge PLU files into a new file
  - ◆ Create and edit PLU files, allowing all text, barcode, pricing etc to be entered
  - ◆ Create and edit label formats, showing graphical layout of label
  - ◆ Run a service tool to help you configure the M series
  - ◆ Run the service tool to diagnose the scales
  - ◆ Take remote control of the M series scales in store or remotely via modem
  - ◆ Backup and Restore legacy CX scales
  - ◆ Communications to scales via RS232C (limited), Ethernet or remotely via modem
  - ◆ Automated upgrade procedure allowing unattended software updates
- ◆ Graphical full diagnostics of printer temperature/resistance and label photo-eye
  - ◆ Save data files as different versions of scale software, allowing older scales to be updated
  - ◆ View file type to check the versions of data files
  - ◆ Ability to view all scales in a network
  - ◆ Change scale configuration on the fly
  - ◆ Scale configuration can be kept on file and used as a master configuration for other networks
  - ◆ MX050 operates on most industry standard computers using Windows operating systems.

## SYSTEM REQUIREMENTS

- ◆ 486/Pentium, with 32Mb of memory and minimum 10Mb free disk space. CD-ROM drive needed for installation.

## COMMUNICATIONS REQUIREMENTS

- ◆ Local store - Ethernet network card must be installed and configured on the PC
- ◆ Remote store - modem must be installed and configured and an outside telephone line available.



*retail and food service weighing solutions*

As we continually strive to improve our products, specifications are necessarily subject to change without notice.

5/02 mx050\_l.p65 PN 07030-0009 Printed in USA

**Avery Berkel North America**  
3133 N 150 E  
LaPorte, IN 46350

**PH Toll-Free:** 800-237-1886  
**PH:** 219-325-9587

**FAX Toll-Free:** 800-237-2063  
**FAX:** 219-325-9594

[sales@AveryBerkelUSA.com](mailto:sales@AveryBerkelUSA.com)  
[www.AveryBerkelUSA.com](http://www.AveryBerkelUSA.com)



A division of Weigh-Tronix, Inc.  
1000 Armstrong Drive  
Fairmont, MN 56031, USA