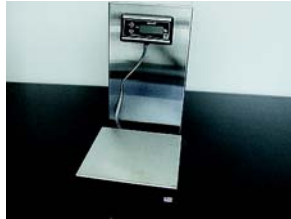


OPTIONS

for 6103, 6112, 6115 portion control scales



Remote Display

The magnetic strip with self-adhesive backing offers easy mounting for any location. 7' (2.1 M) standard cable length.

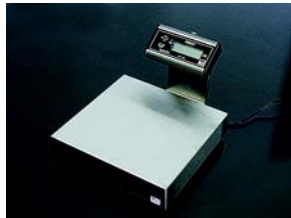
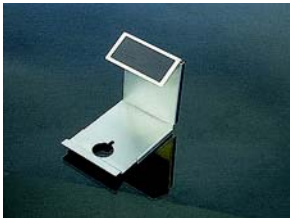
AVAILABLE ON MODELS: 6103 6112 6115



Remote Swivel Bracket

The adjustable stainless steel "U" shaped swivel bracket offers easy mounting for virtually any environment.

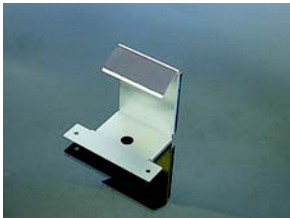
AVAILABLE ON MODELS: 6103 6112 6115



Rear Flat Bracket

The detachable stainless steel bracket makes for easy cleaning and comes standard with a sanitary magnetic strip.

AVAILABLE ON MODELS: 6103 6112 6115



Rear Flat Bracket

The detachable stainless steel bracket makes for easy cleaning and comes standard with a sanitary magnetic strip.

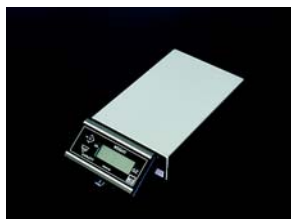
AVAILABLE ON MODELS: 6103 6112 6115



6" or 12" Pole Bracket

The detachable stainless steel bracket completely surrounds cable, removes for easy cleaning, and has a sanitary magnetic strip.

AVAILABLE ON MODELS: 6103 6112 6115



Front Mount Bracket

The detachable stainless steel front mount bracket makes for easy cleaning and comes standard with a sanitary magnetic strip.

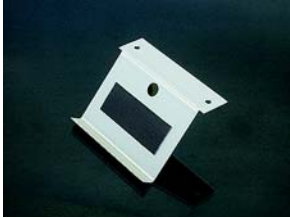
AVAILABLE ON MODELS: 6103 6112 6115



Front Mount Bracket

The detachable stainless steel front mount bracket makes for easy cleaning and comes standard with a sanitary magnetic strip.

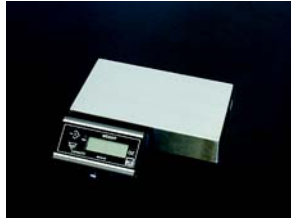
AVAILABLE ON MODELS: 6103 6112 6115



Front Mount Shelf Bracket

The detachable stainless steel front mount shelf bracket makes for easy cleaning and comes standard with a sanitary magnetic strip.

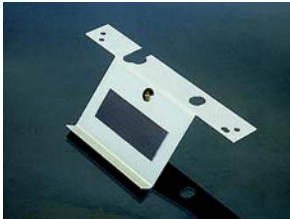
AVAILABLE ON MODELS: 6103 6112 6115



Side/Front Mount Bracket

The detachable stainless steel bracket comes standard with a sanitary magnetic strip. Mounts to side of 6103, or front of 6112.

AVAILABLE ON MODELS: 6103 6112 6115



Side/Front Mount Shelf Bracket

The detachable stainless steel shelf bracket comes standard with a sanitary magnetic strip. Mounts to side of 6103, or front of 6112.

AVAILABLE ON MODELS: 6103 6112 6115



4' or 10' Zero Footswitch

4' model designed for installation in prep tables.
10' model for floor use.

6103 6112 6115



4' Panel Mount Zero Switch

Compact zero mechanism for mounting in prep tables.

6103 6112 6115



retail and food service weighing solutions

Avery Berkel North America
3133 E 150 N
LaPorte, IN 46350

PH Toll-Free: 800-237-1886
PH: 219-325-9587

FAX Toll-Free: 800-237-2063
FAX: 219-325-9594

sales@AveryBerkelUSA.com
www.AveryBerkelUSA.com



As we continually strive to improve our products, specifications are necessarily subject to change without notice. Product complies with F.C.C..



A division of Weigh-Tronix, Inc.
1000 Armstrong Drive
Fairmont, MN 56031, USA